

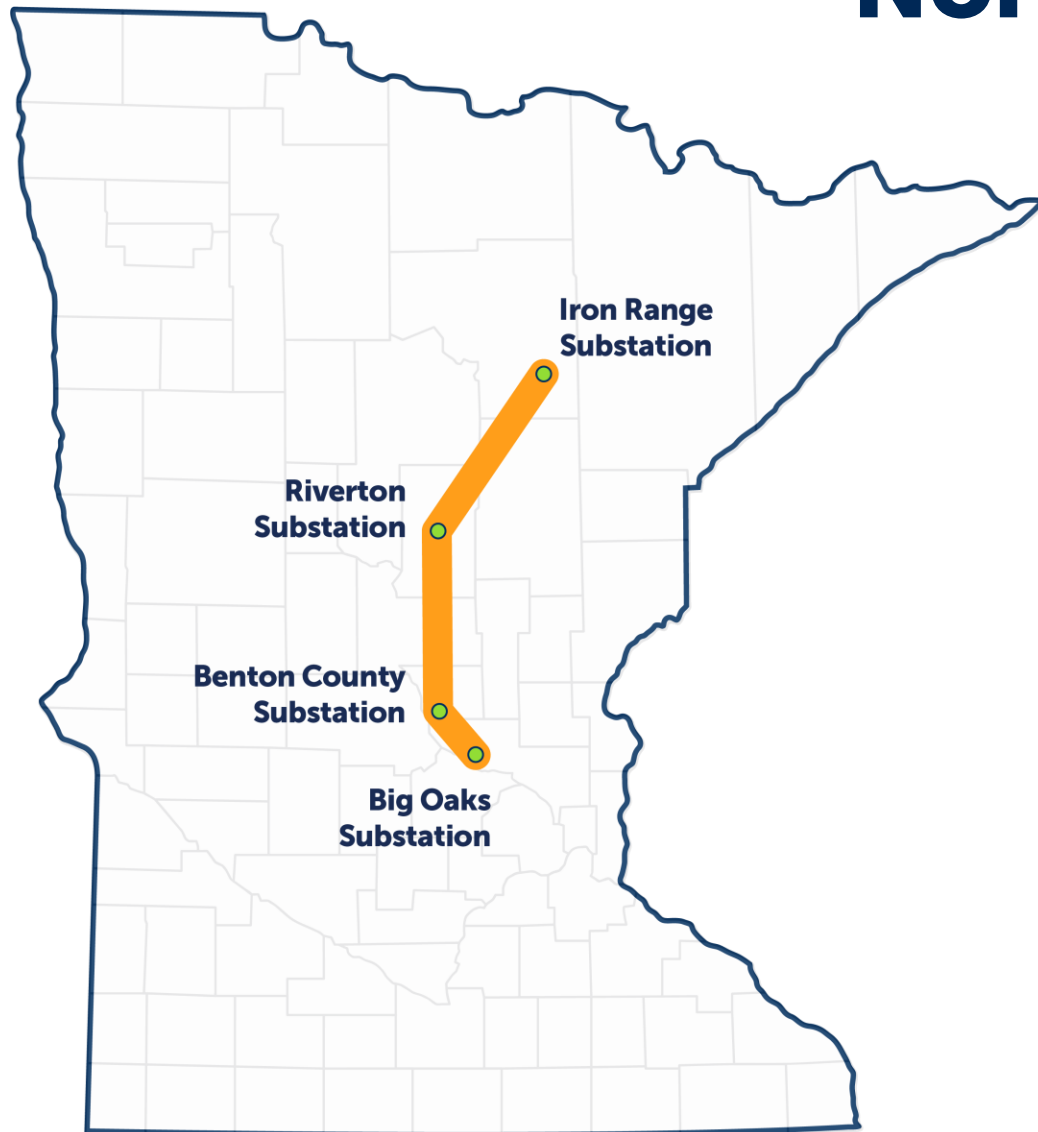
Northland Reliability Project



Project Updates

Crow Wing County, June 2024

Northland Reliability Project



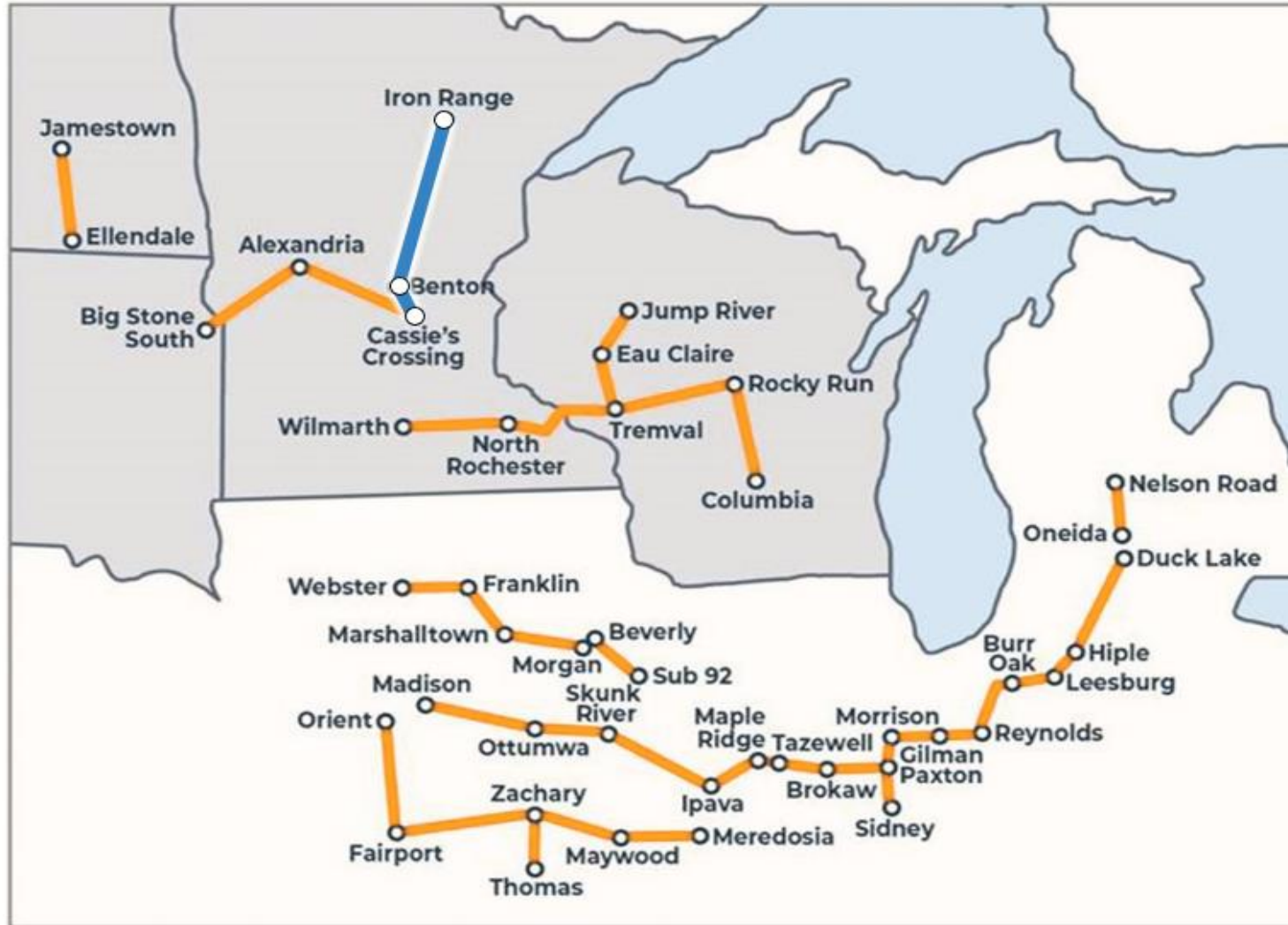
**Double-circuit
345-kV line**

**Over 85% co-located
with existing HVTL**

180 miles

**Expanded and new
substations**

MISO-approved project: part of a regional plan

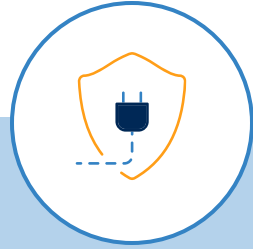


Fulfilling a need



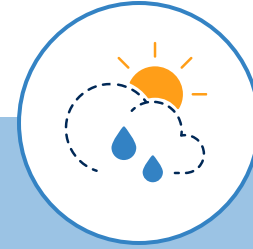
Maintaining reliability

Provide system support as energy resources continue to evolve.



Enabling clean energy

Increase capacity to safely and reliably deliver clean energy from where it's produced to where it's needed by our customers and members.



Strengthening resiliency

Enhance system resiliency during extreme weather events.



Enhancing flexibility

Plan proactively to meet changing customers' and members' power needs due to decarbonization and electrification.

Two main project segments

- **Segment one:** Iron Range Substation to Cuyuna Series Comp Station to Benton County Substation
- **Segment two:** Benton County Substation to Big Oaks Substation

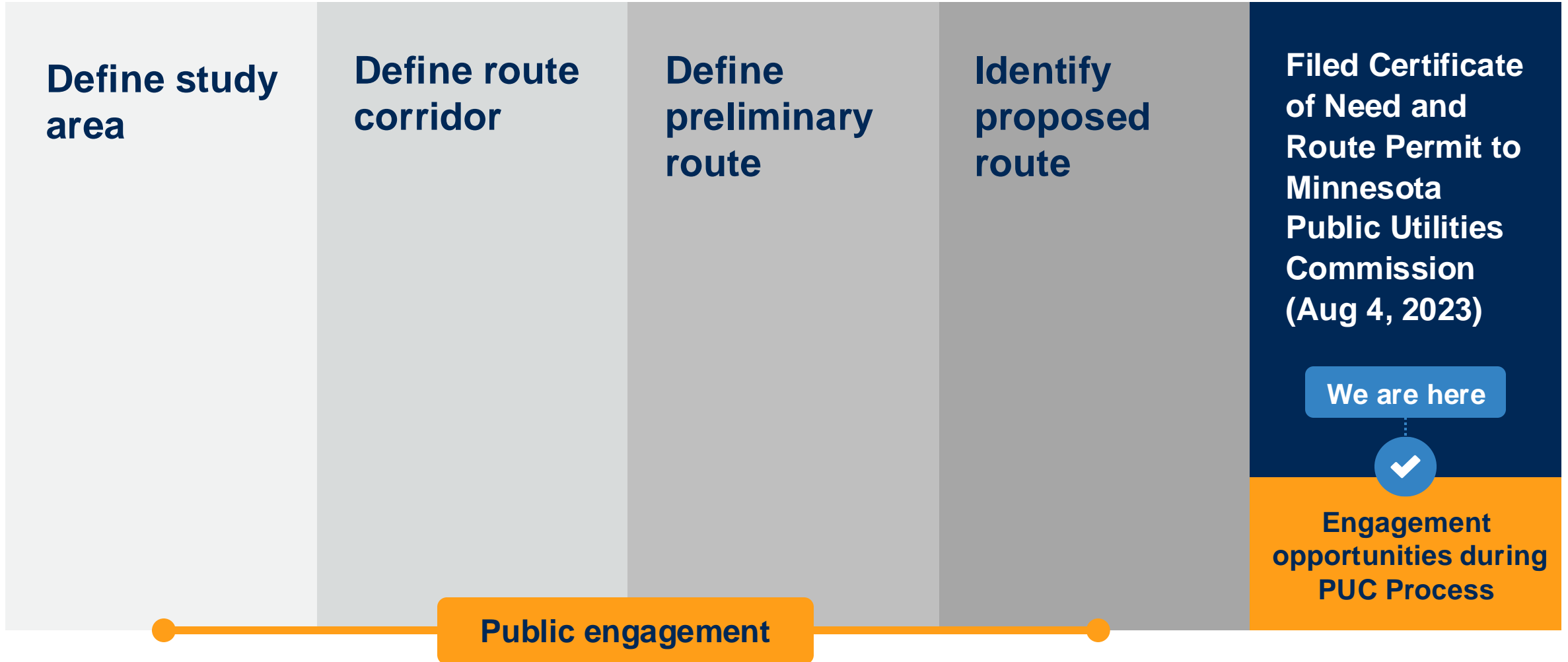
Legend

- ▲ Expand existing substations
- New substation

- Segment one
- Segment two

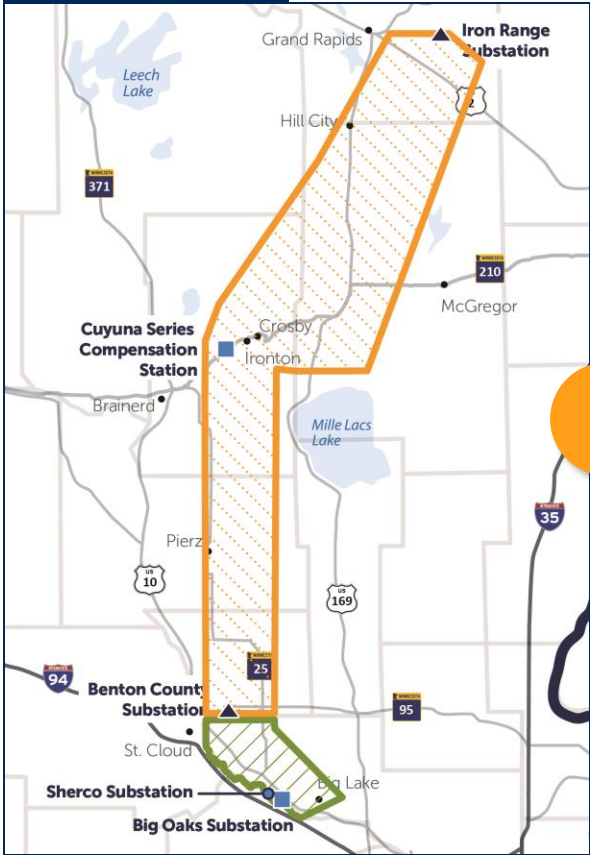


Our routing process & input opportunities

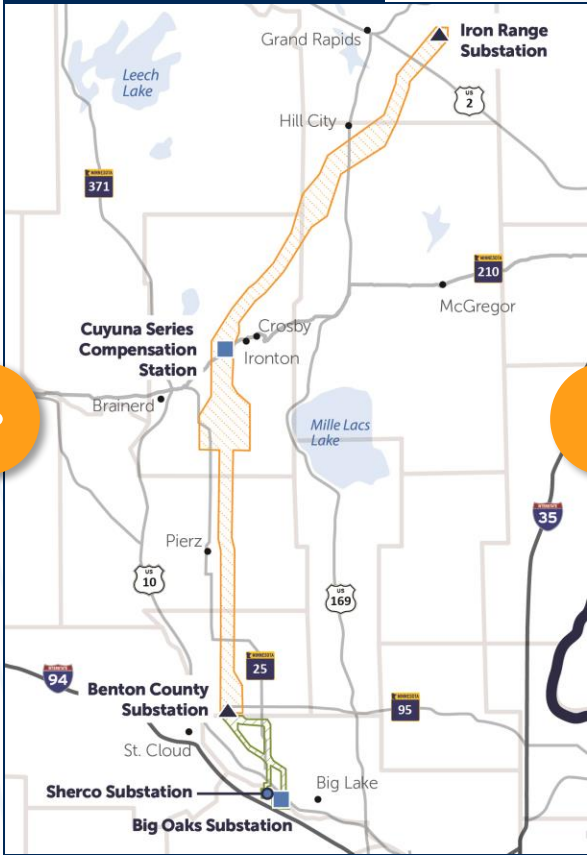


Route Development

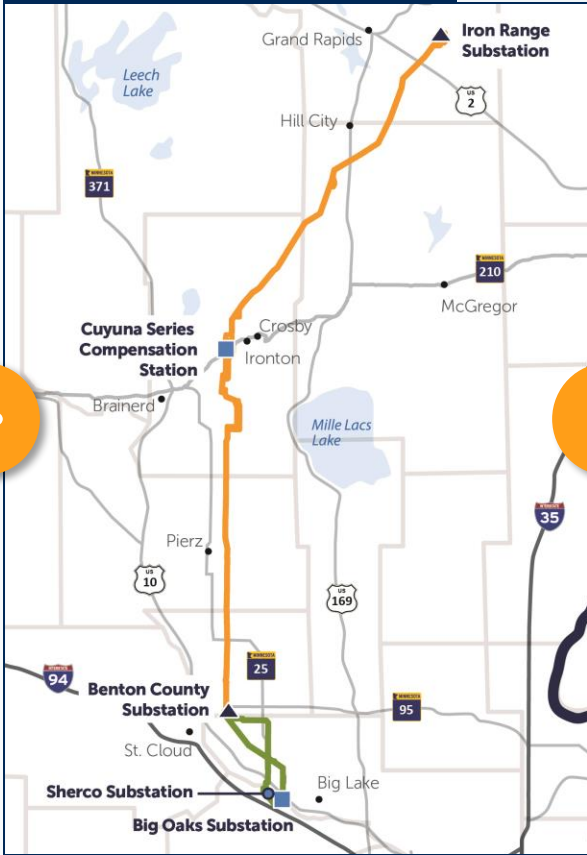
Study area



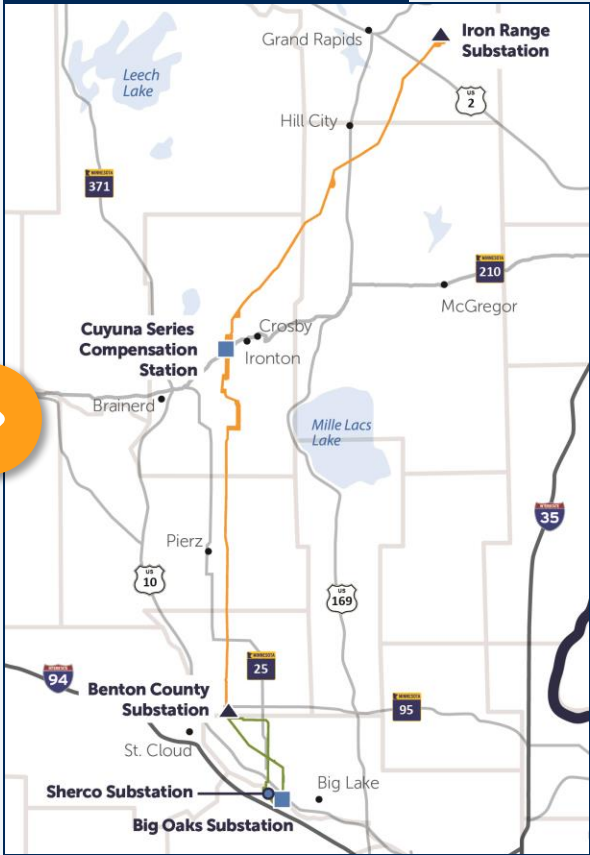
Route corridor



Preliminary route



Proposed route



Proposed Route – Crow Wing County



Route Alternatives – Crow Wing County



State Regulatory Process

- August 2023 - Submitted a joint Certificate of Need and Route Permit Application to the Public Utilities Commission (PUC)
- October 2023 – PUC/Department of Commerce (DOC) public scoping meetings
 - Collected public feedback on the proposed routes and consider route alternatives
 - Identified route alternatives being evaluated in the Environmental Assessment (EA)



Visit

edockets.state.mn.us

- Certificate of Need: docket **22-416**
- Route Permit: docket **22-415**

State Regulatory Process



- June 2024 – DOC publish EA
- July 2024 - Administrative Law Judge (ALJ) hold public hearings across the project area
- Fall 2024 - ALJ report with recommendations to the PUC
- Late 2024 - PUC decision on route permit

Visit

edockets.state.mn.us

- Certificate of Need: docket **22-416**
- Route Permit: docket **22-415**

Field Surveys

Started
October 2023



Continuing
May – November 2024



Continuing
Into 2025

**Landowner notices provided in advance of surveys*

Types of surveys



Biological



Wetlands



Land



Cultural
resources



Noxious weeds

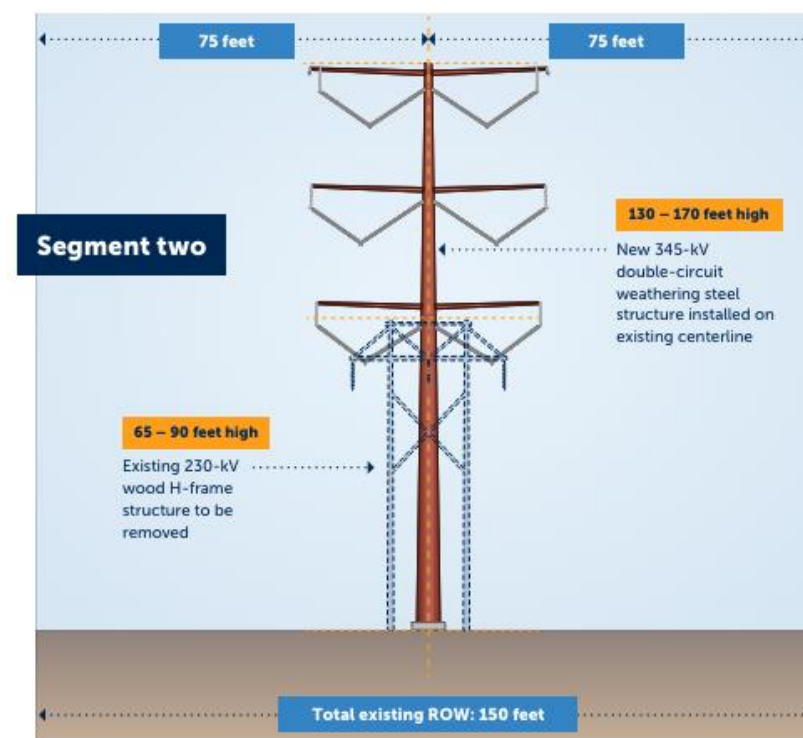
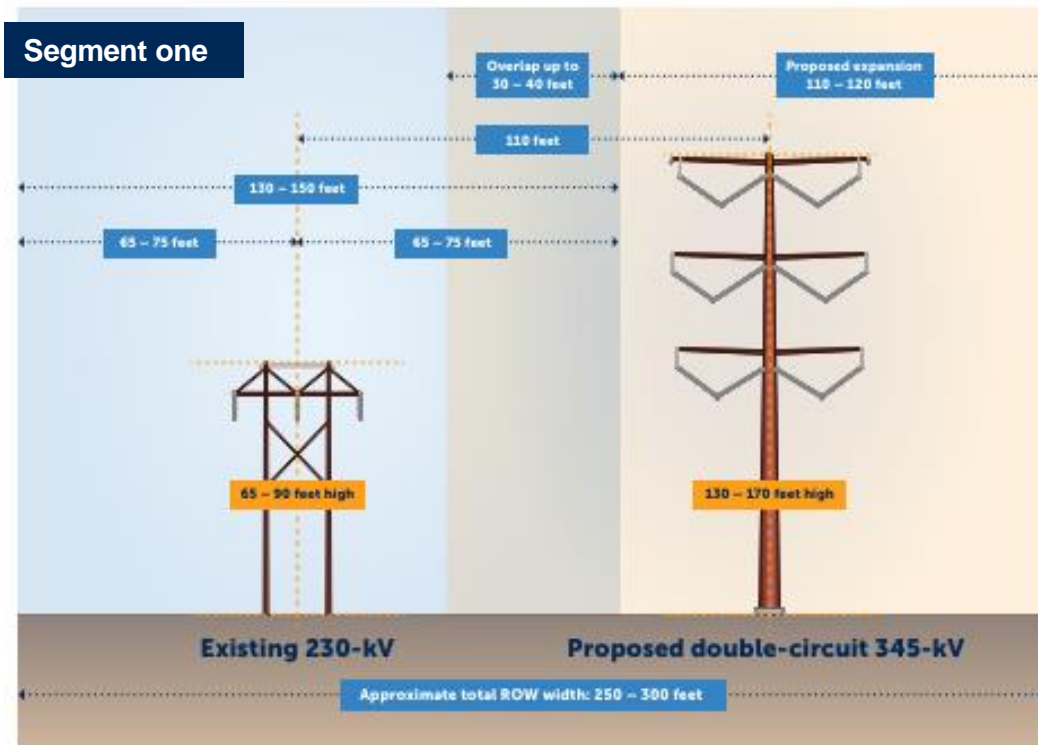
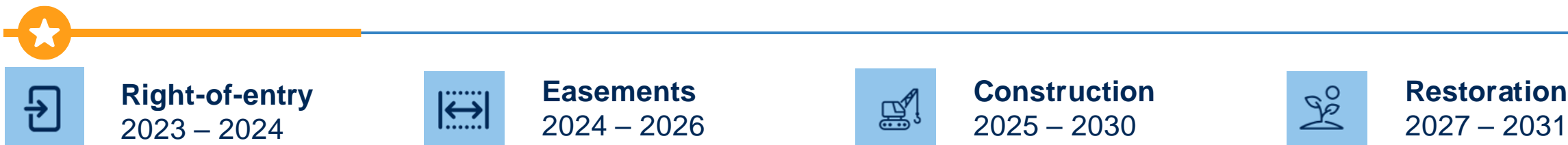


Soil borings

**Acoustic detectors
for bats**



Real Estate Process



Upcoming Project Milestones



PUC/DOC EA and public hearing



Engineering design for substations and transmission line



State and federal permitting efforts



Environmental field surveys in Segment 1 in Spring and Fall 2024



Anticipate construction starting on Segment 2 in Fall 2025

Northland Reliability Project



Connect with us!



northlandreliabilityproject.com



Send us an email at
connect@northlandreliabilityproject.com



Call our hotline at
218-864-6059